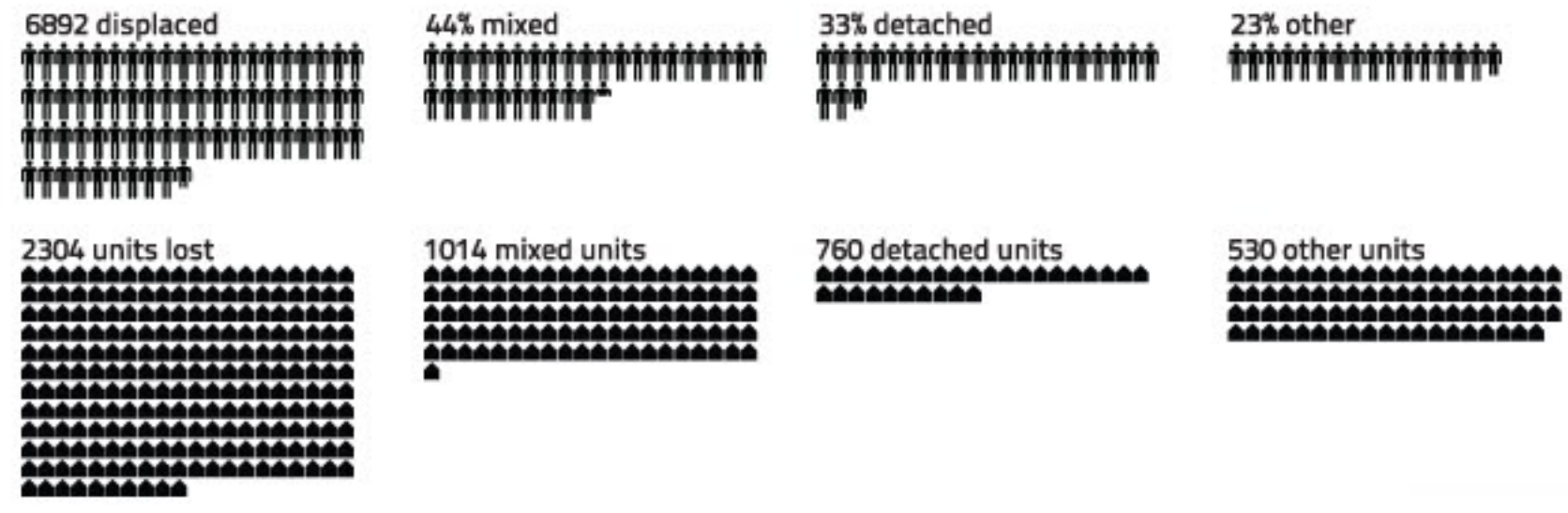


THE BAY LINE

BY 2110 SEA LEVEL WILL RISE BY APPROXIMATELY 1 METER INNUNDATING PORTIONS OF OAKLAND, ALAMEDA AND SAN FRANCISCO WHERE PRESENTLY RESIDE APPROXIMATELY 7000 PEOPLE.

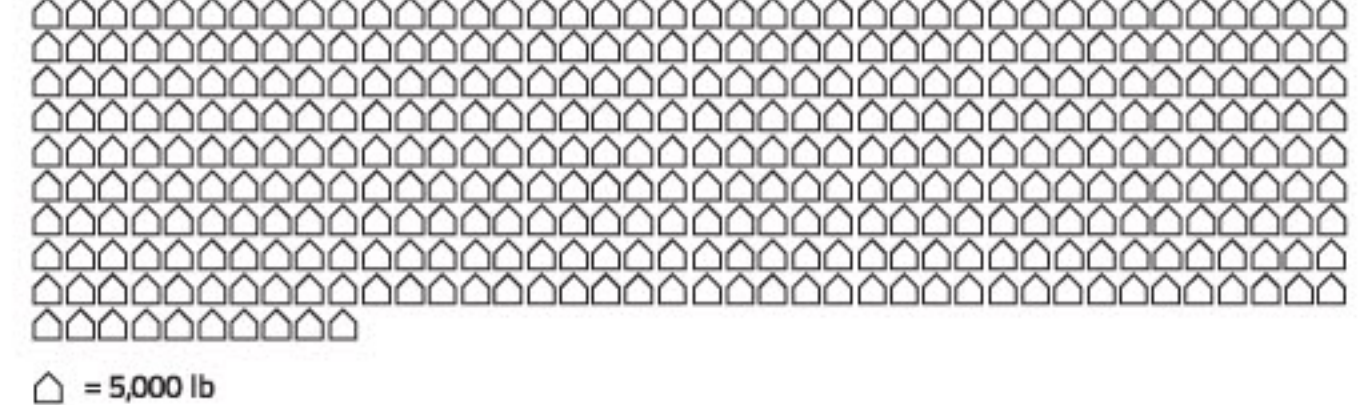
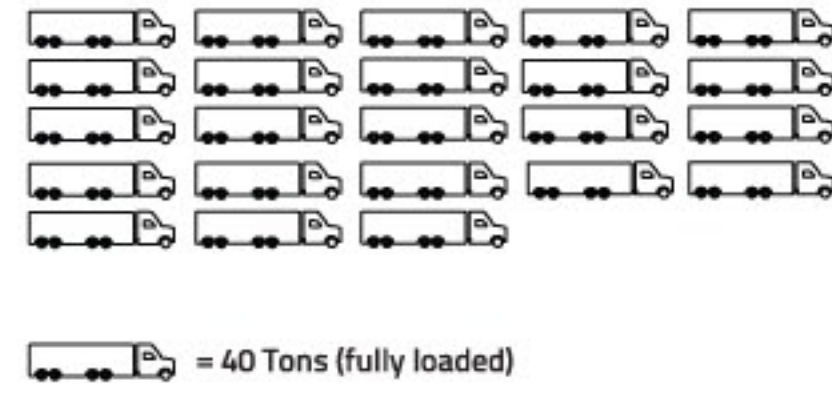
It will also flood green spaces, including the majority of the Bay Trail, marinas and businesses. This project proposes the preservation of the Bay Bridge to create housing for the 6,892 people who would currently be affected by a sea level rise of 1 meter by constructing housing in the lower deck of the Bay Bridge. The upper deck would be reserved for an urban park, with program that supports the residents of the Bay Line. Private and public marinas would be added to the base of the bridge's piers and the bridge would be seismically retrofitted to increase the lifespan of this historic infrastructure.

PROJECTED LOST HOUSING IN SFBA WITH 1 METER SEA LEVEL INCREASE



BAY BRIDGE LOAD CAPACITY = 1,400/LINEAR FOOT

= weight of 2,315 Fully Loaded Tractor Trailers or, the weight of 37,041 3 Bedroom Modular Homes



👤 = 100 residents in flood zone
 🏠 = 10 residences with an average of 150 sf/person (U.S. mean average)

FLOODED HOUSING TYPOLOGY BREAKDOWN



The Bay Trail 2010

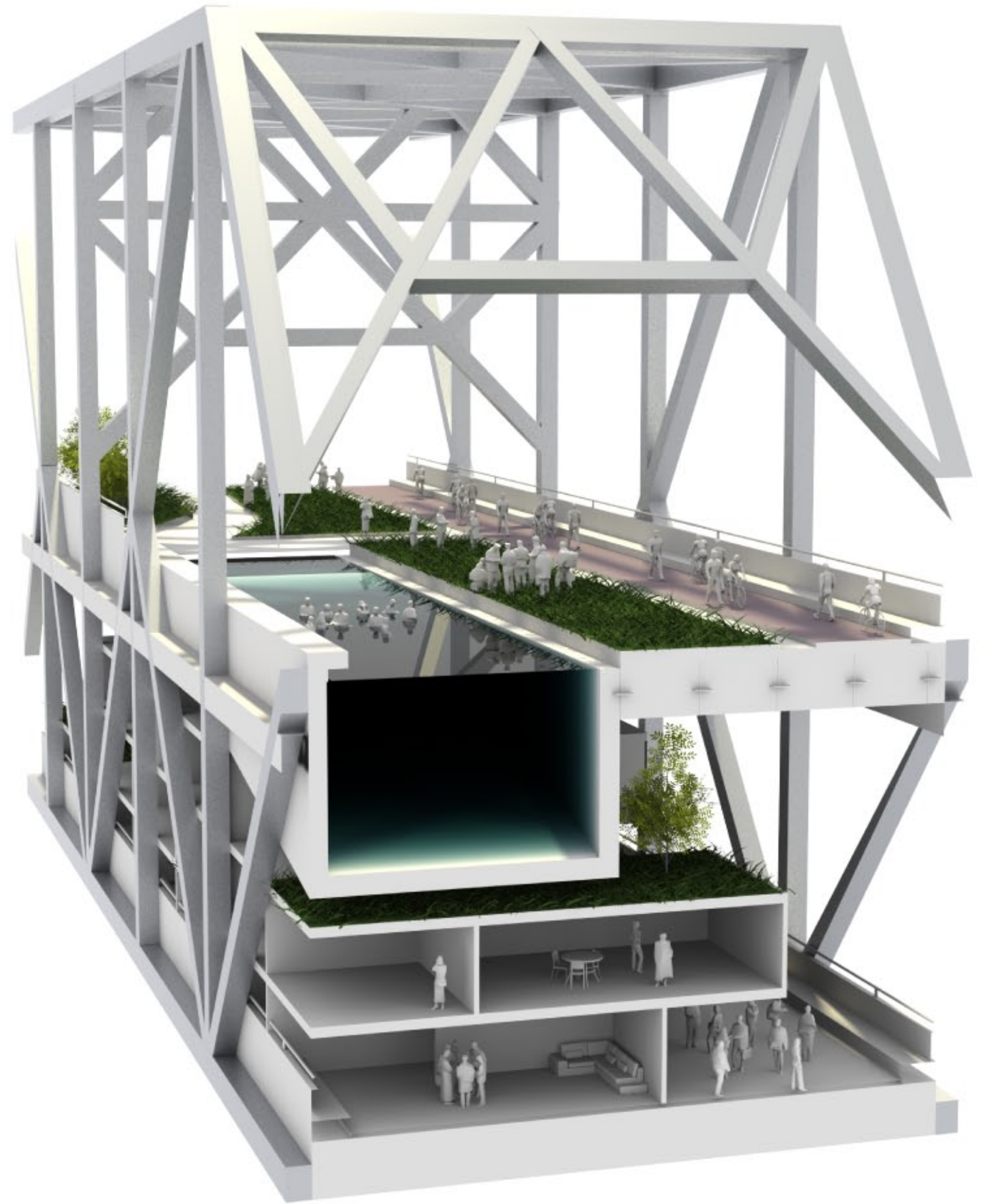
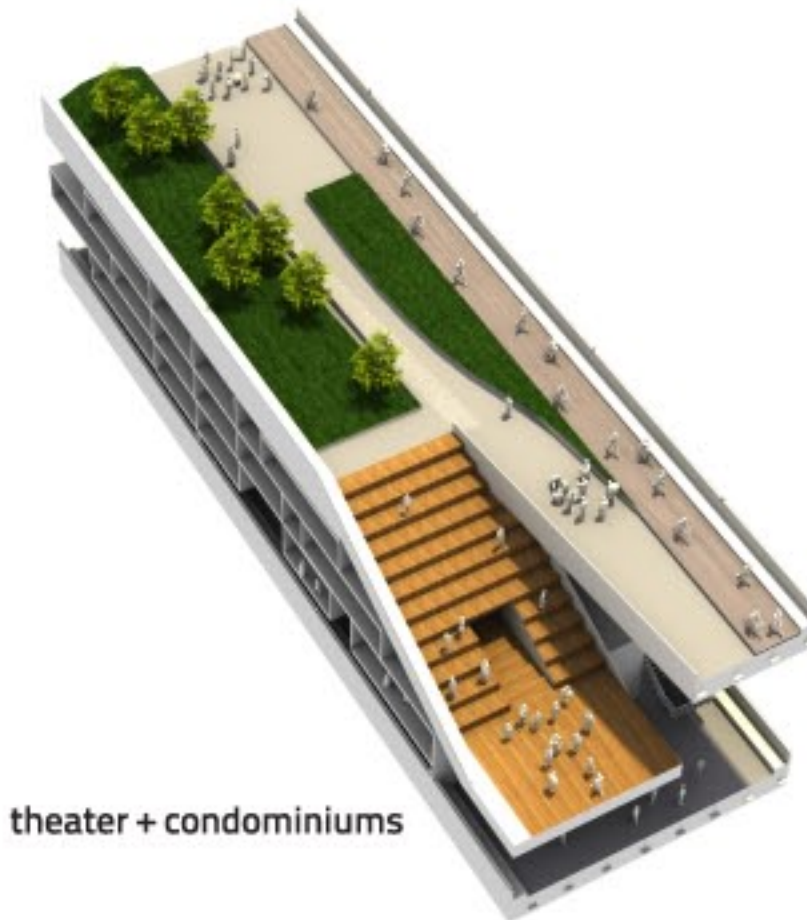
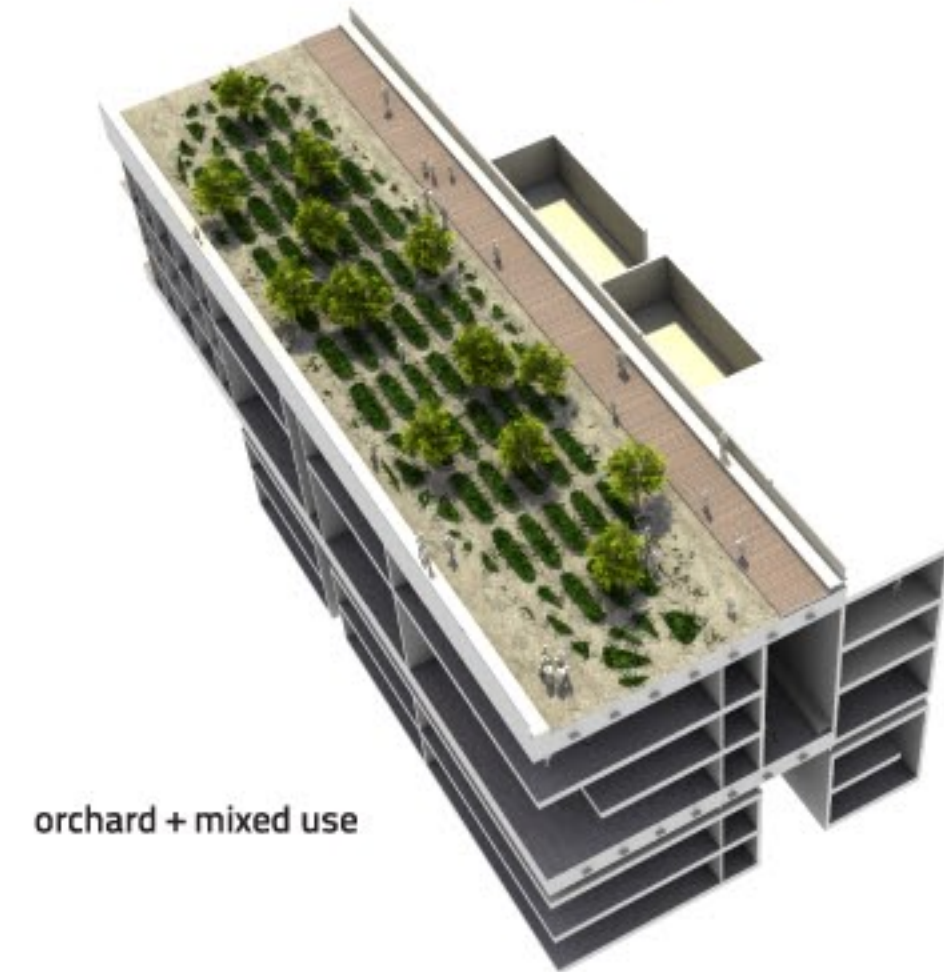
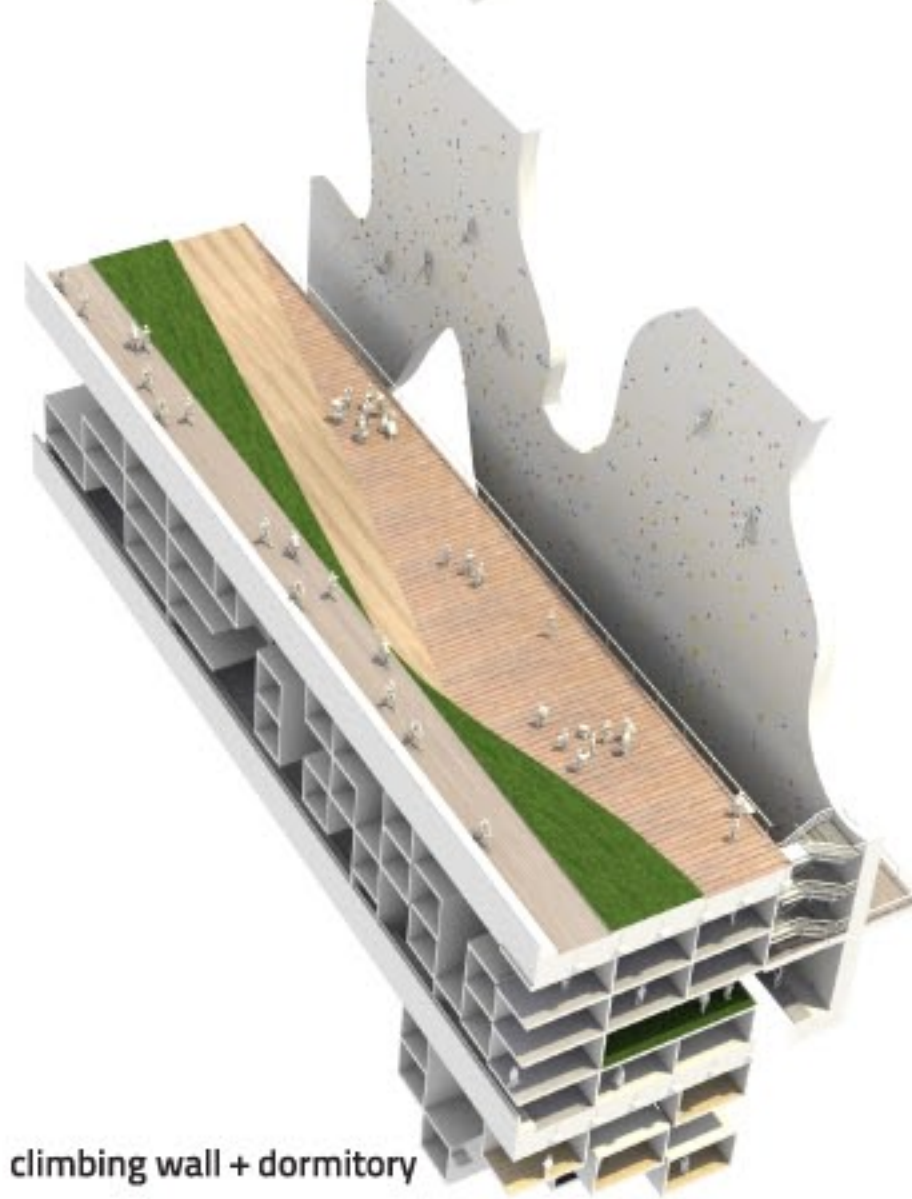
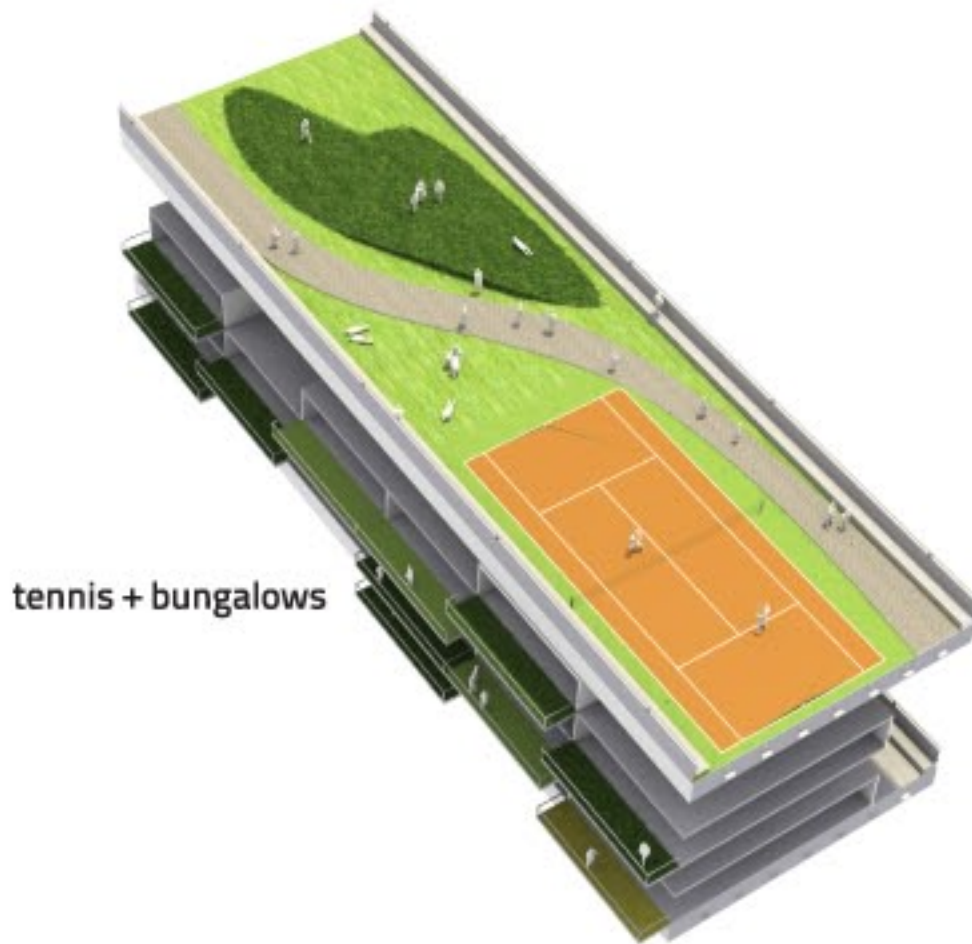
Flooded Bay Trail (dashed) and New Proposed Trail



HIGH LINE, New York
1.45 miles

PROMENADE PLANTEE, Paris
2.8 miles

BAY LINE, San Francisco
1.9 miles



section through swimming pool and residential apartments



various sections through program: Dormitory/Climbing Wall, Row House/Garden, Tennis Courts/Bungalows, Theater/Condos

