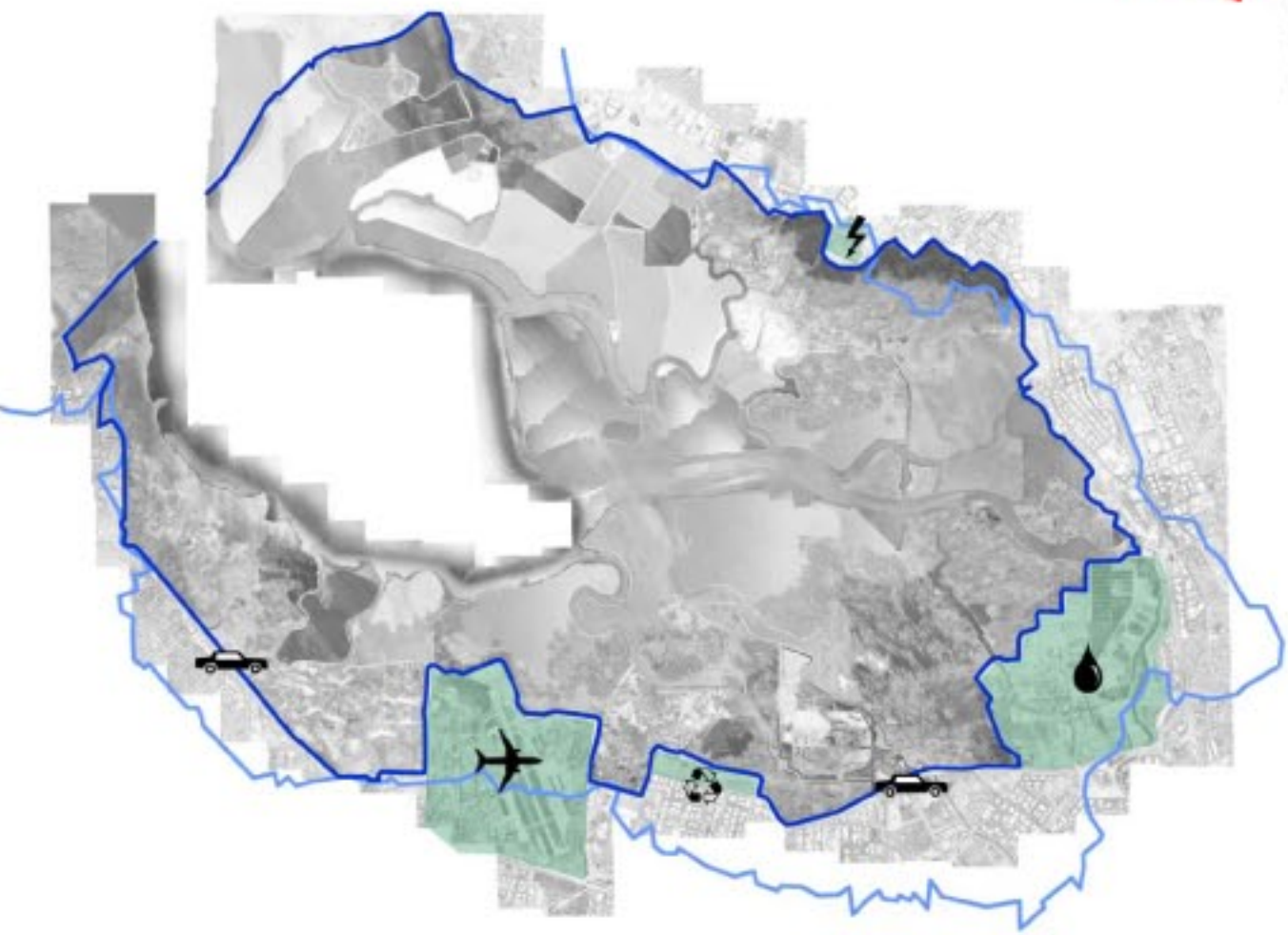
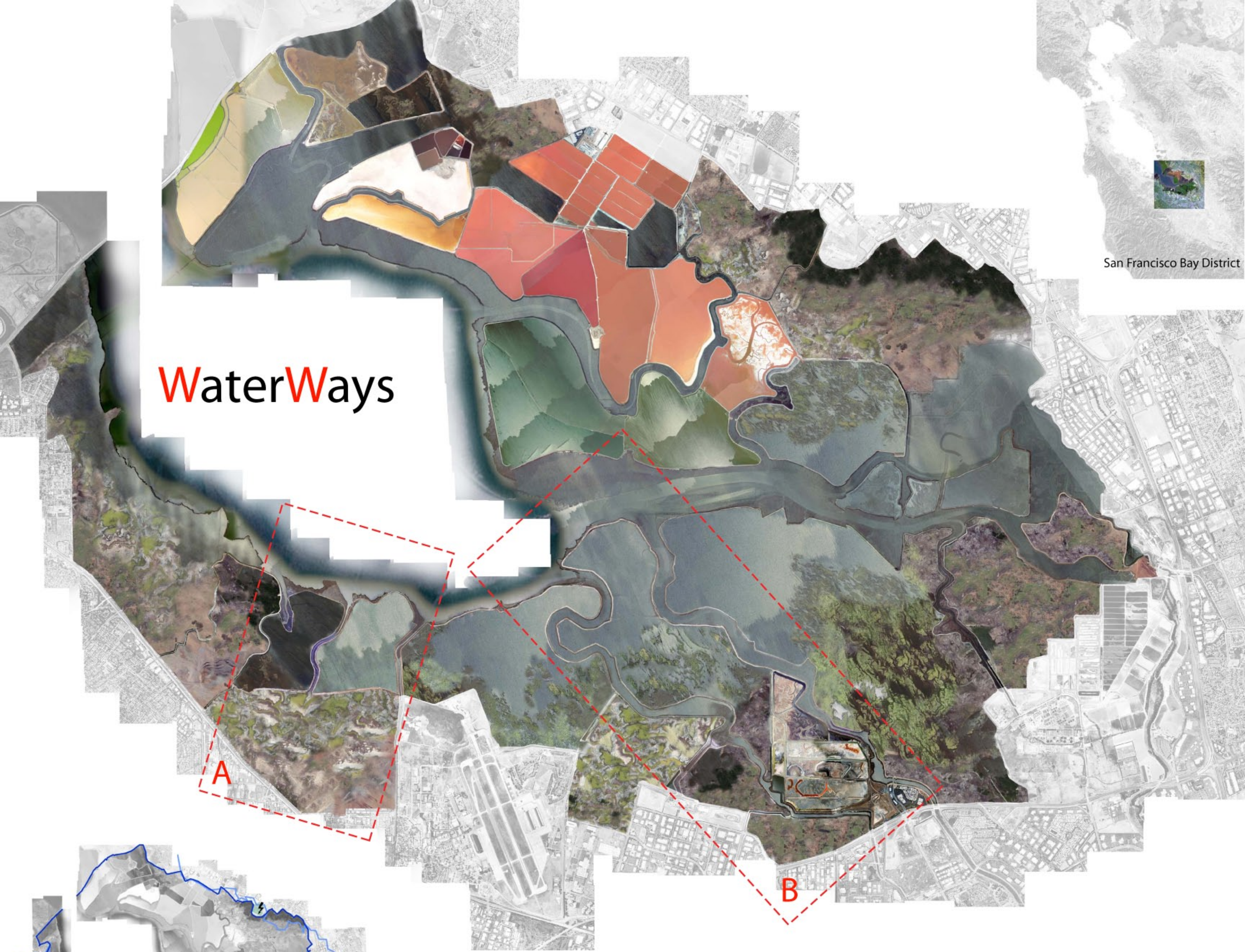


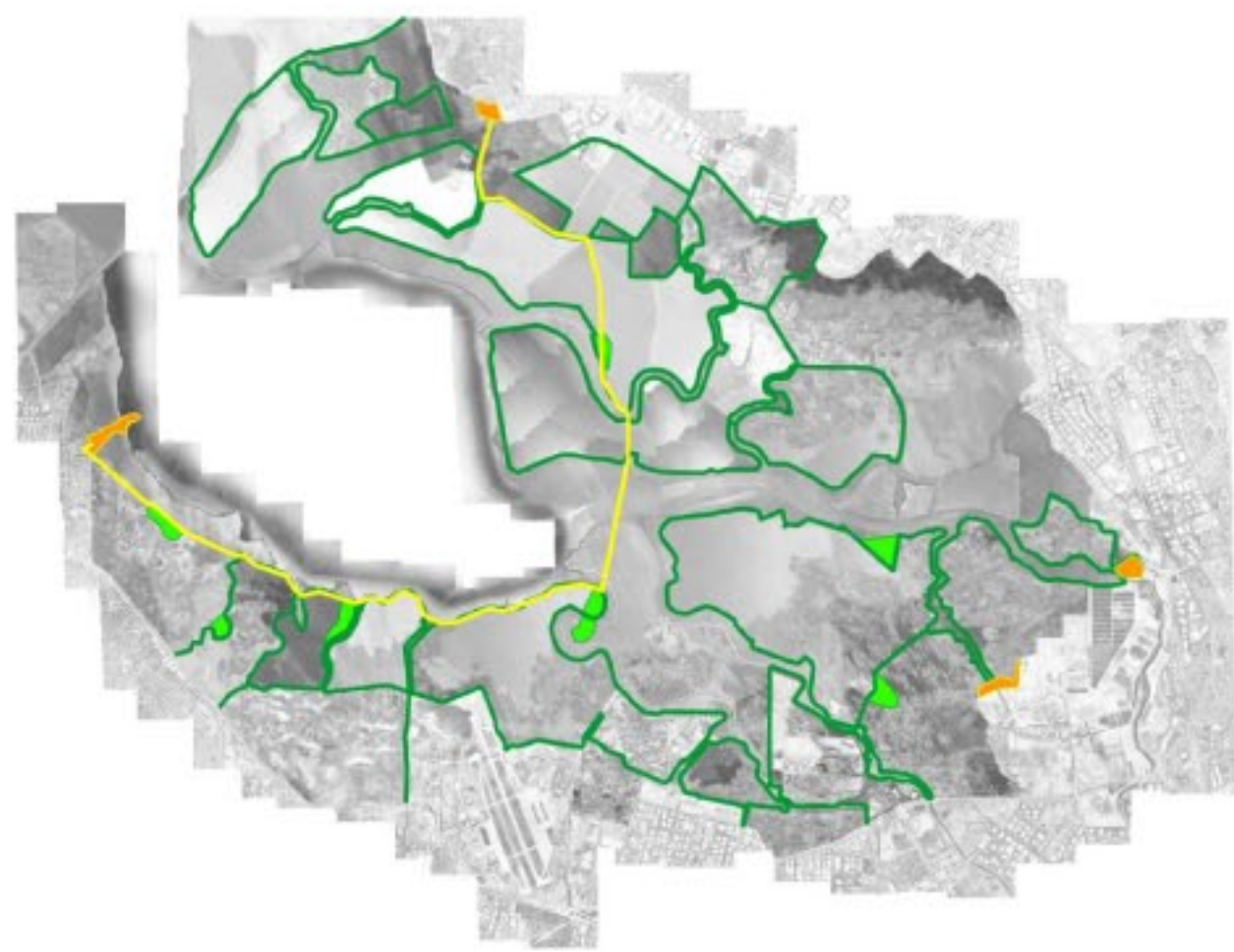


San Francisco Bay District

WaterWays



— supposed future coastal line_1.50m sea rise
— new designed coastal line_1.50m sea rise
— main infrastructures dammed out



— touristic docks
— water ways
— multifunctional islands
— levees path



WaterWays Project is about redesigning the shoreline in the part southern Dumbarton Bridge of the San Francisco South Bay.

Aim of the project is a coordination between several existing projects of restoring old salt ponds into tidal marshes, as well the preservation of some of the existing salt ponds redesigning their shape in order to maintain salt industry at work, the presence of high salinity water wildlife species but also the unique landscape of red water swirling doodle bends and fractal shape crystallizing salt.

Since the sea level rising takes place in a long period, a hundred years as mentioned in the resources data, the project will develop a plan for a progressive conversion of urbanized areas into shoreline wetland along the tide rises.

Anyway some of the areas beneath future sea level holding infrastructures and industrial facilities will be dammed and preserved with levees.

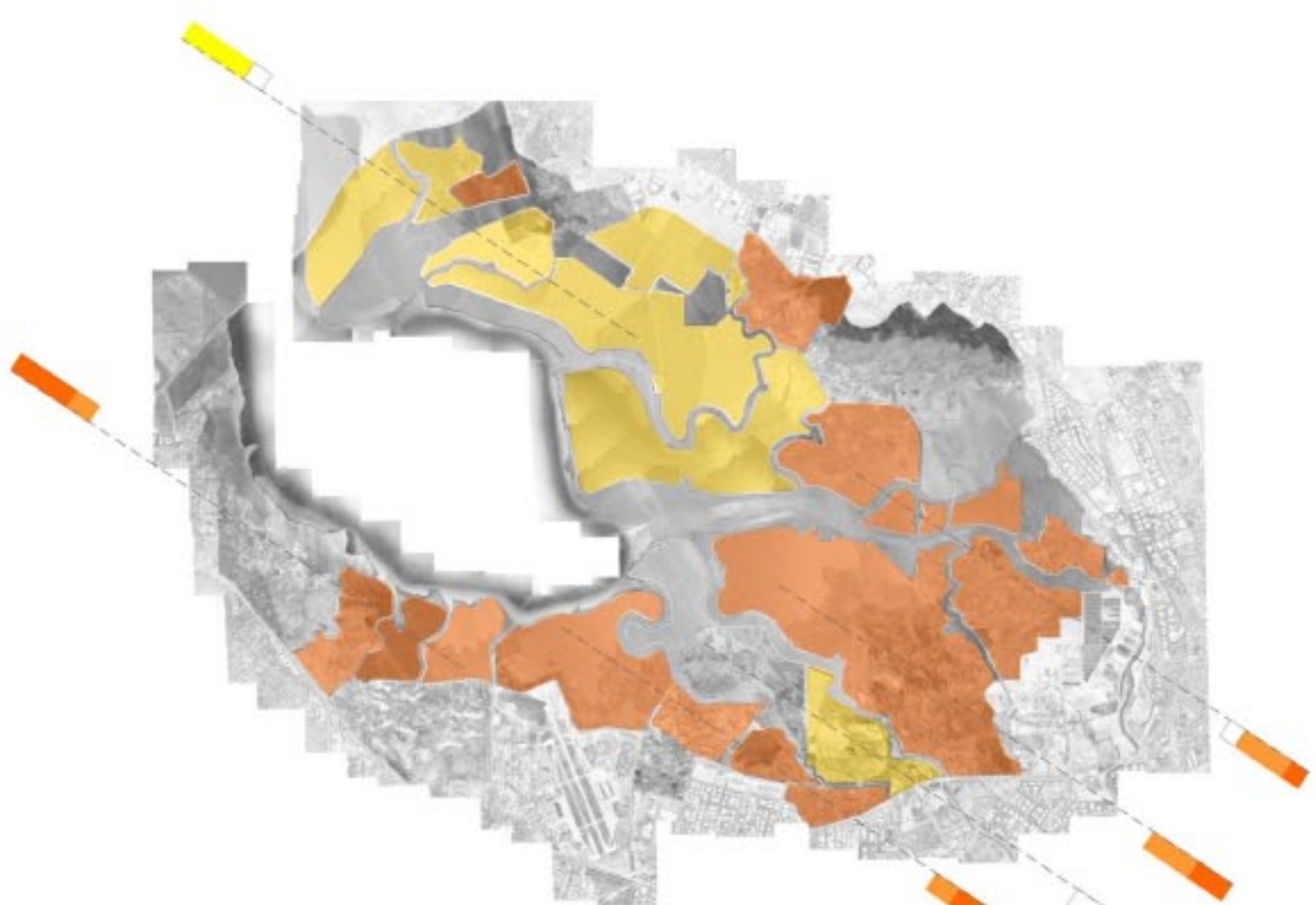
Levees of old reconvered salt ponds standing taller than the tide will carry a network of trails trough the wetland to the main route above the inner levee belt in South Bay. This pathway is supposed to connect the remaining seafont levee sectors with a system of floating platforms to small islands where will stand some facilities for several activities in order to enjoy visiting the tidal marsh. Those platforms are mobile and can be joined together creating a large floating area able to receive large numbers of people for public events.

The project locates the main connections between the city and the wetland in those urban areas close to the future coastline and free of infrastructural barriers where the urban landscape slowly melts to the wetland's one by planting gardens of native coastal flora following the city block pattern and then making them grow wild.

To join the urban environment to the park system there will also be some ferry lines moving from a dock in the river next to city to the multifunctional islands on bay's inner loop.

Levees for the conversion of salt ponds into tidal wetland should be broken down in portions so the tide is allowed to come in and fill the ponds with seawater allowing tidal flora and fauna colonize the interior of the ponds. Where to break the levee is decided considering that natural sedimentation carried by tidal currents will have to cumulate where the inner belt route is, building up the foundation of a new island along the pathway.

Islands along bay's inner belt pathway are home to facilities such ferry dock, restaurants, fish seafood farming, as well hosting several outdoors activities such fishing, boat and bike rental, birdwatching and even beachlife.



— active salt ponds
— reconstructed wetlands
— Tidal-wetlands, Untidal-wetlands and Salt-ponds proportion along the section