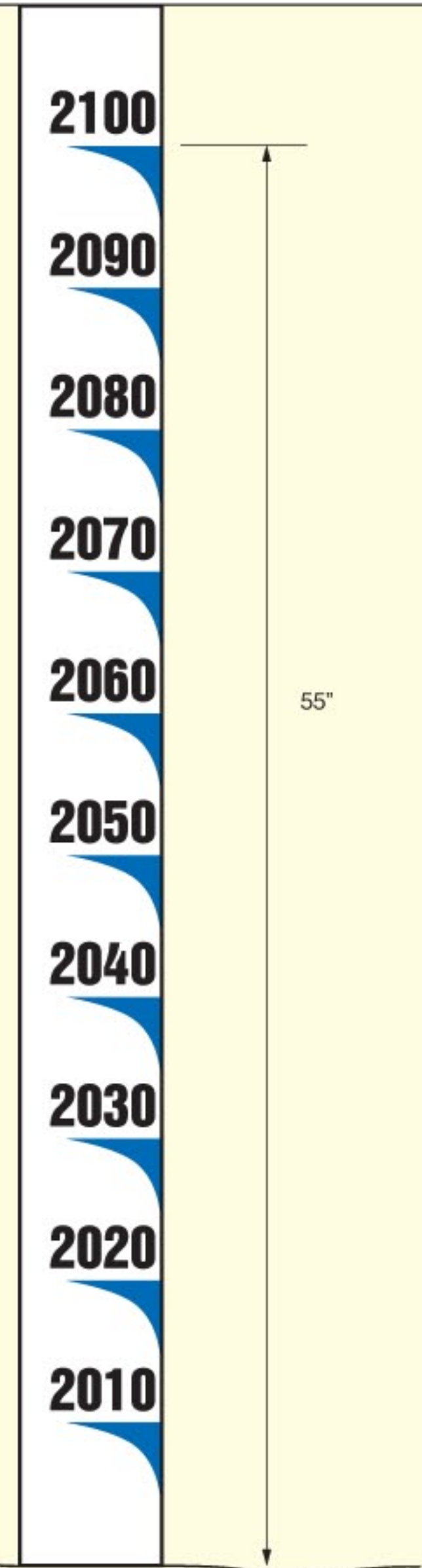
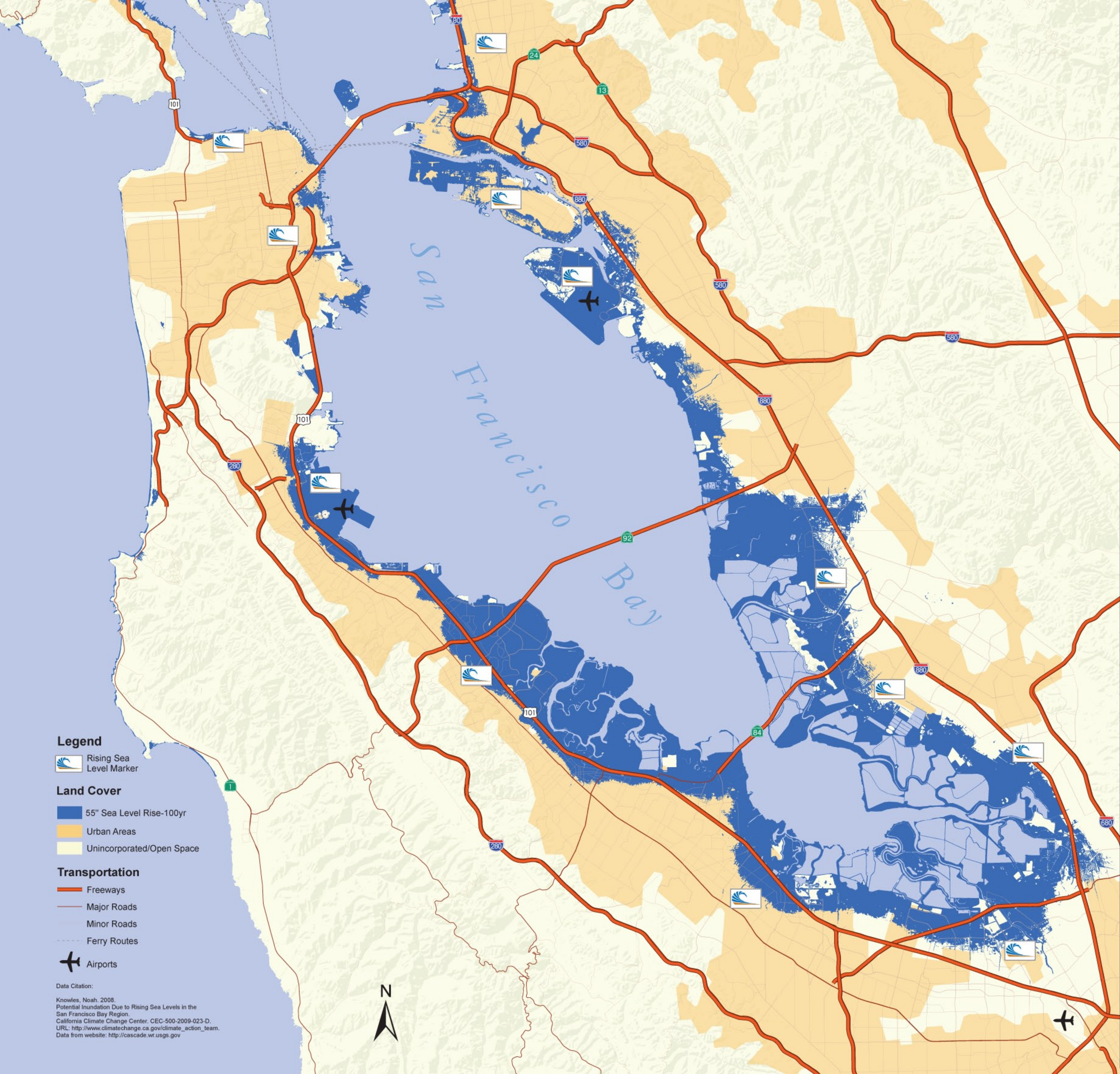


# RISING SEA LEVEL-MARKER



The 'rising sea level-marker' will become an internationally recognized logo that symbolizes one of the impacts of global warming. This logo and the 55" marker will create a visual impact of the consequences of a rising sea level and the resulting coastal inundation. The intended results of this simple and easily understood marker are to increase social awareness and encourage public involvement in addressing global warming as a whole.

The marker can be used by government agencies to effectively illustrate the impacts of global warming by delineating land areas that will be under water within the next 100 years. The first prototypes would be placed in the San Francisco Bay Area Region in high visibility locations near Highway 101 and Interstate 880 in areas experiencing a changing shoreline configuration as a direct result of global warming. For detailed information a website will be developed in conjunction with these signs.



## Legend

- Rising Sea Level Marker
- Land Cover**
- 55" Sea Level Rise-100yr
- Urban Areas
- Unincorporated/Open Space
- Transportation**
- Freeways
- Major Roads
- Minor Roads
- Ferry Routes
- Airports

Data Citation:  
 Knowles, Noah. 2008.  
 Potential Inundation Due to Rising Sea Levels in the  
 San Francisco Bay Region.  
 California Climate Change Center. CEC-500-2009-023-D.  
 URL: [http://www.climatechange.ca.gov/climate\\_action\\_team](http://www.climatechange.ca.gov/climate_action_team).  
 Data from website: <http://cascade.wr.usgs.gov>