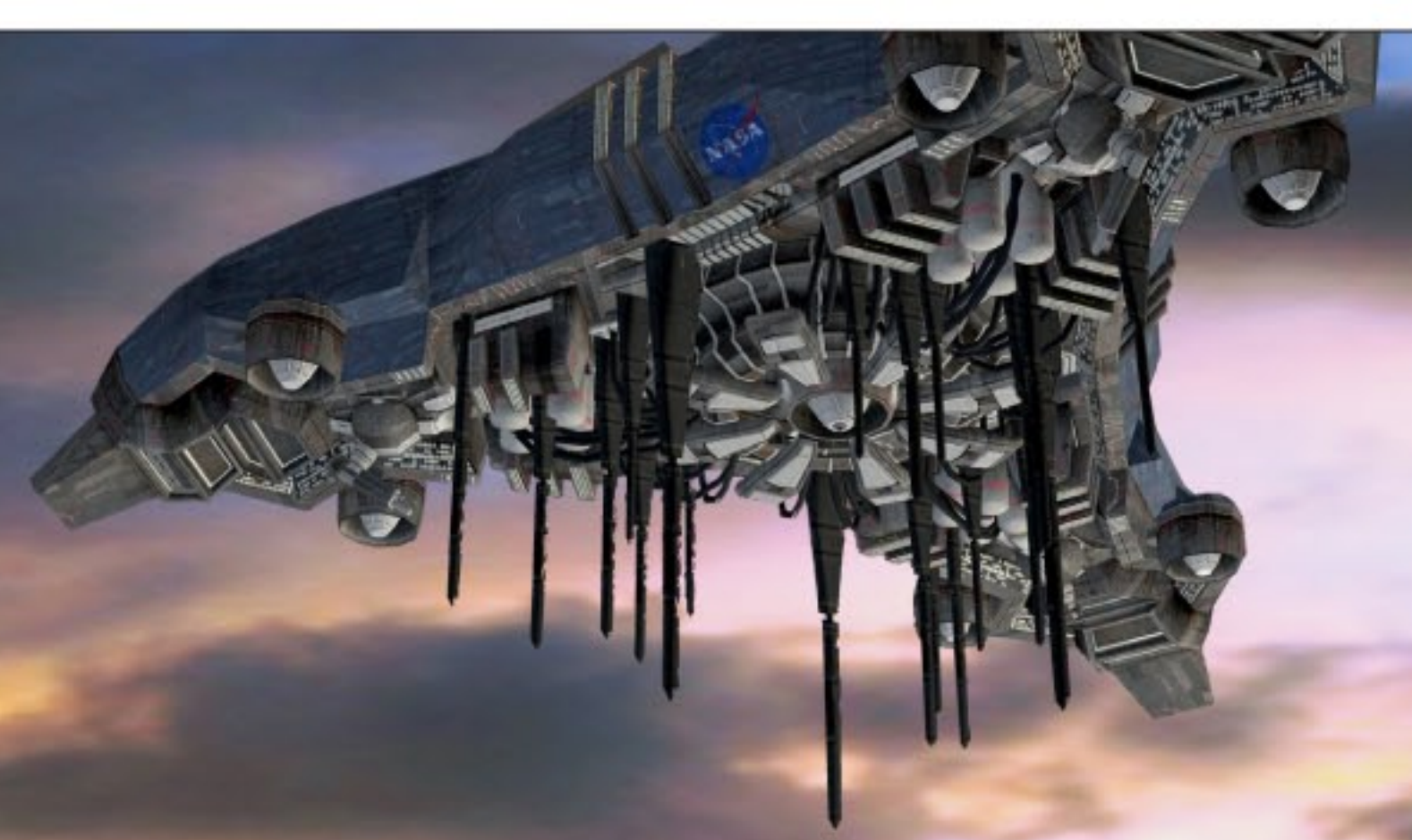


"while the growth of great ice sheets takes millennia, the disintegration of ice sheets is a wet process that can proceed rapidly..."

JAMES HANSEN, IN CLIMATE CODE RED, P35-36



The Golden Loch cargo vessel leaves the loch on the lower water level and continues its journey to San Francisco Harbour. The Golden Loch further houses the Headquarters of the U.S. Centre for Climate Change, a Conference Centre with hotels and luxury appartments

GOLDEN LOCH 2200

The majesty of the Golden Loch

enjoy San Francisco as it was in its heyday of the 20th century, preserved for all eternity through the majesty of the Golden Loch...

the global community's choice to power on, Business as Usual (BAU) into the 21st century saw Greenhouse Gas emissions continue to rise and with this, sea level rise worsened as polar ice melt increased beyond initial projections
this sea level rise resulted in devastation for most nations at some level -and utter annihilation for others
the geographically fortunate San Francisco community took leadership on this issue in the early decades of the 21st century
and demonstrated its ability for self preservation at the grandest scale as a celebration of humanity's drive to dominate nature
and a righteousness to live unchanged lives
building the first grand scale sea wall the world had ever seen
the Golden Loch

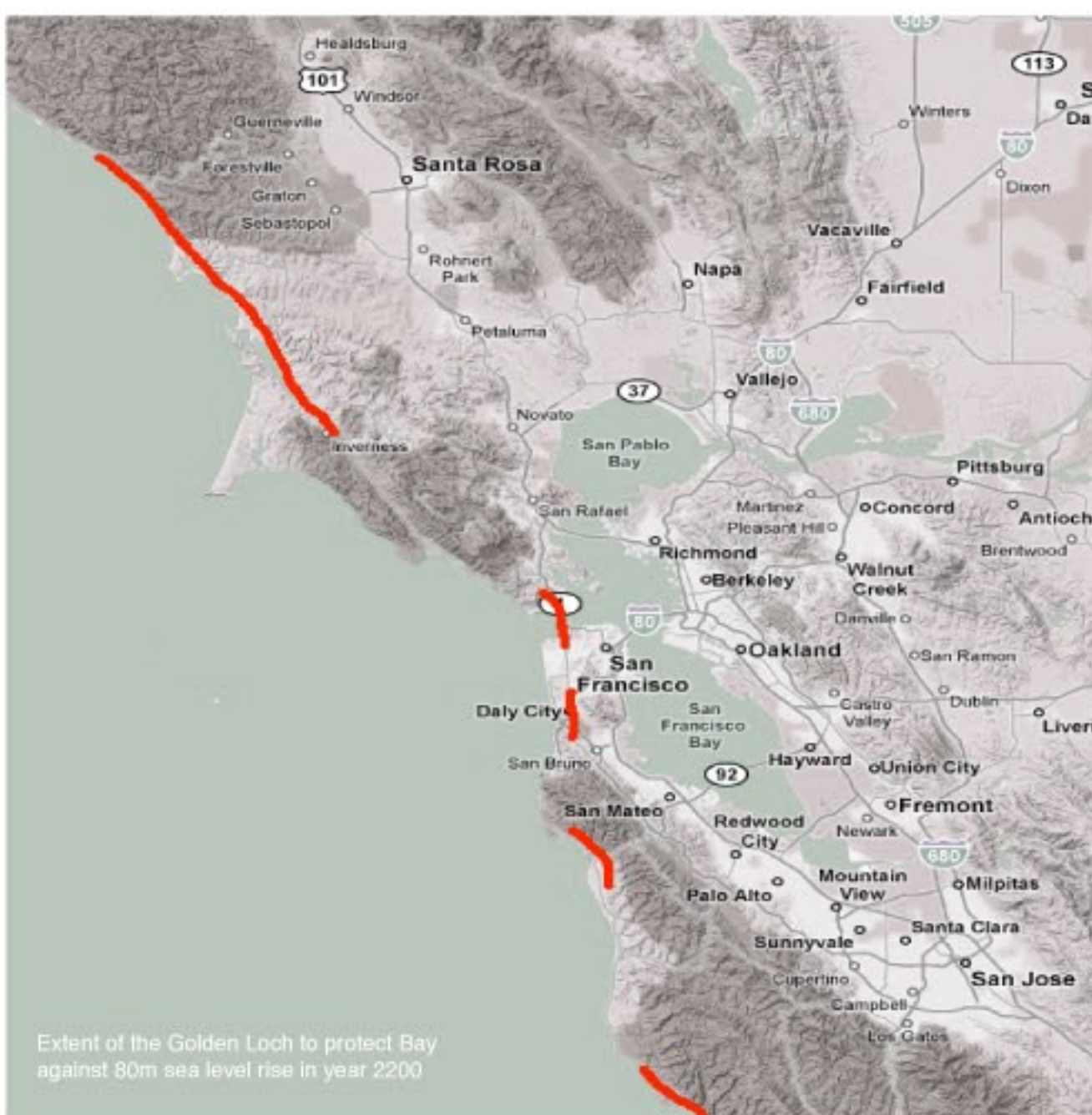
built to withstand complete polar melting and accommodate the subsequent worst-case scenario rise in sea level of 80m
the Golden Loch

in an engineering marvel that can withstand the worst case scenario of sea level rise and preserves the magical city of San Francisco in all the glory of its heyday
the golden loch is listed at one of the wonders of the 21 century
making maximum use of the dying age of cheap and abundant fossil fuel energy, San Francisco took the bold step to completely safeguard against the worst case scenario of sea level rise from the outset
and to create an international landmark and tourist destination in the process
the Golden Loch

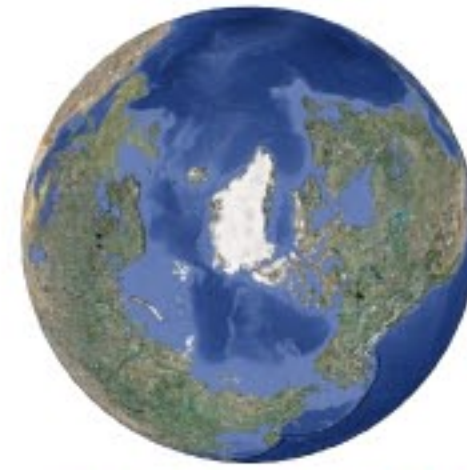
even visible from space!

those still economically well endowed to be tourists in the 22nd century can choose from a range of luxury accommodation situated in the Golden Loch

enjoy the majestic views of the city skyline
or place some bets in one of the grand casinos
all bets for sea level rise destroying prime waterfront property prices are off, thanks to the Golden Loch



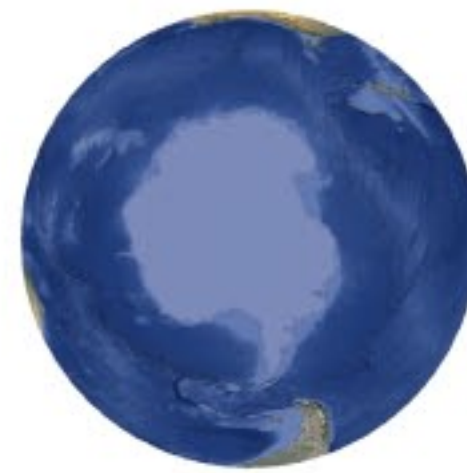
Extent of the Golden Loch to protect Bay against 80m sea level rise in year 2200



MELTING POLAR ICECAPS

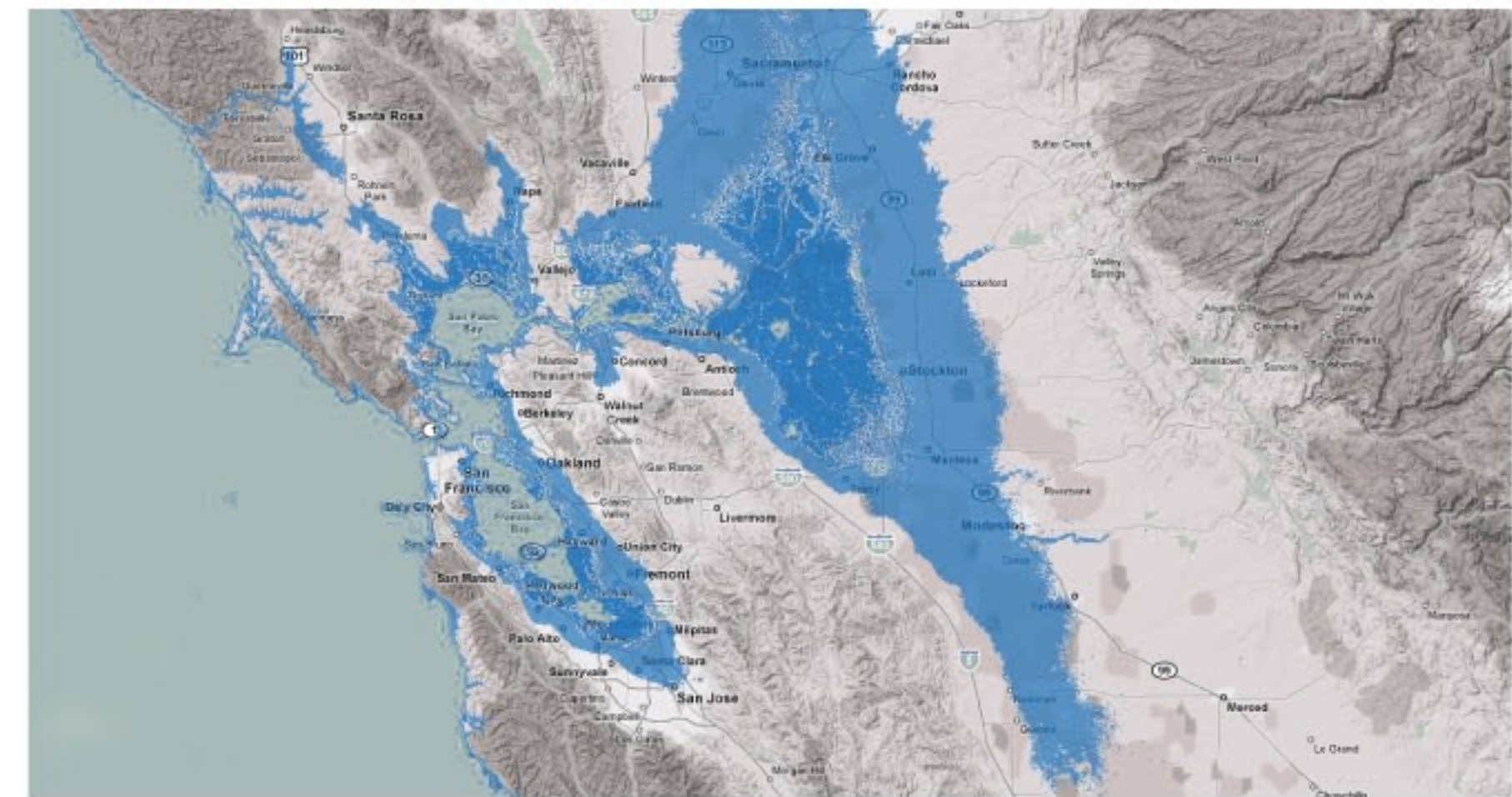


MELTING POLAR ICECAPS



MELTING POLAR ICECAPS

+20m Rise in sea level in 2100



+50m Rise in sea level in 2150



+80m Rise in sea level in 2200



APPROXIMATE SEA LEVEL RISE IN RELATION TO TIME

