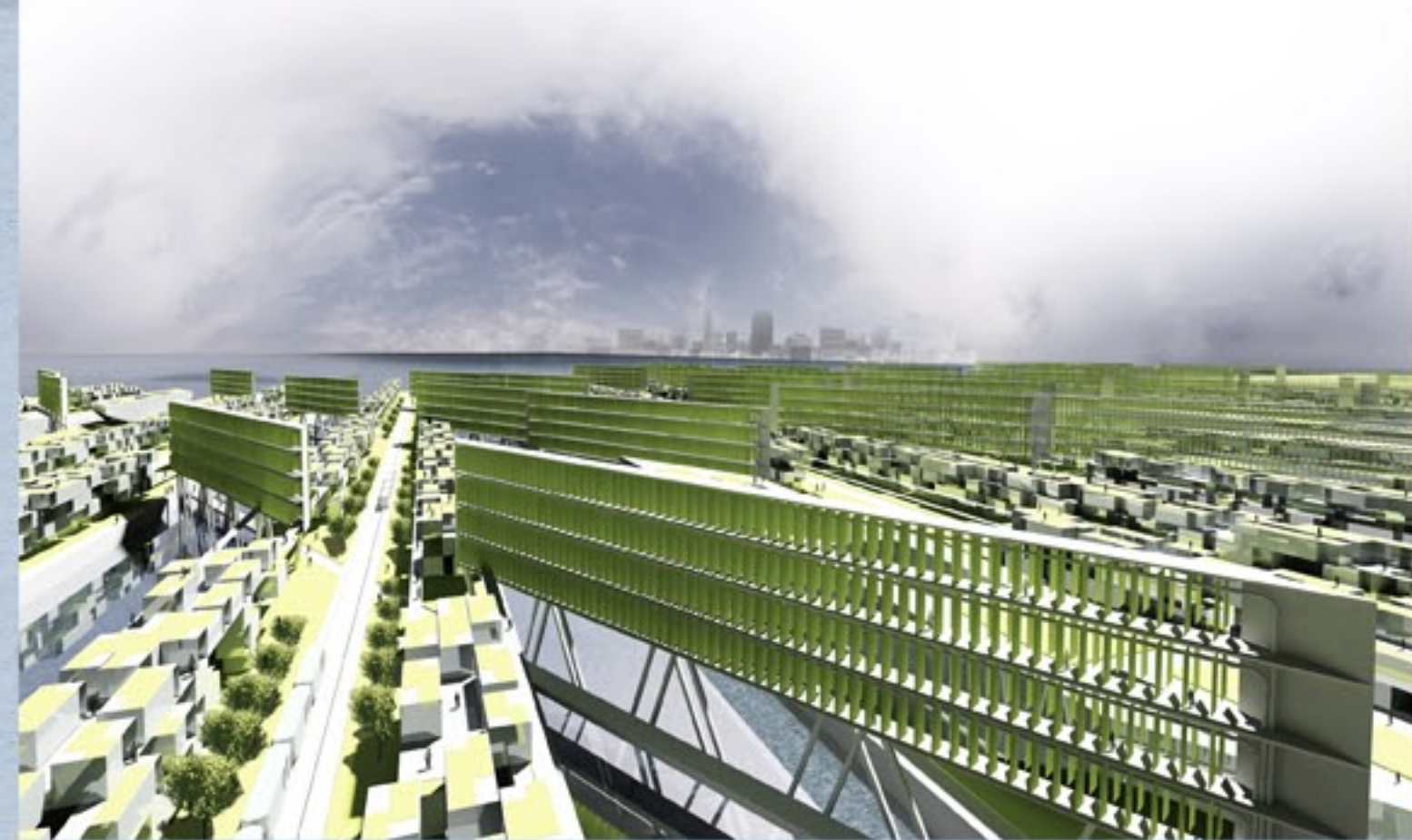
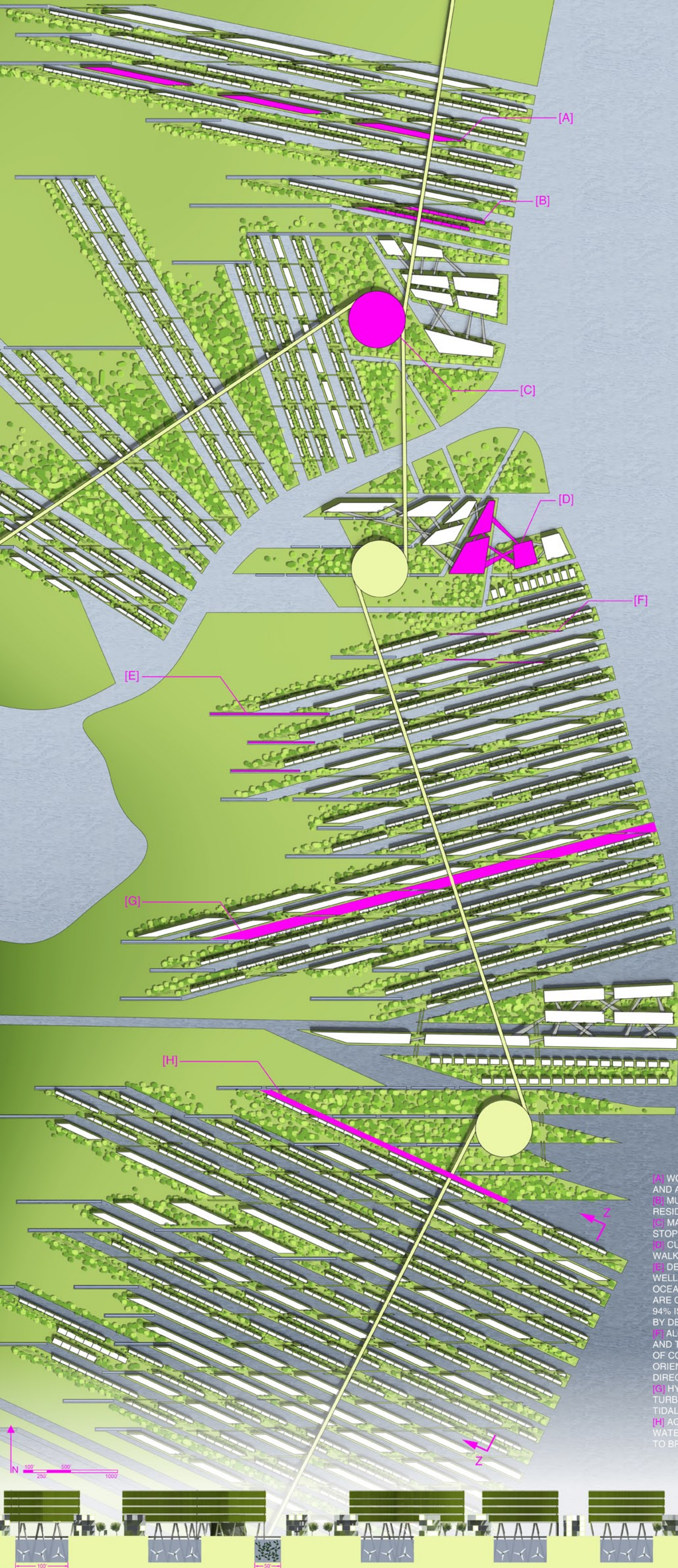


# ADVANCED SEA

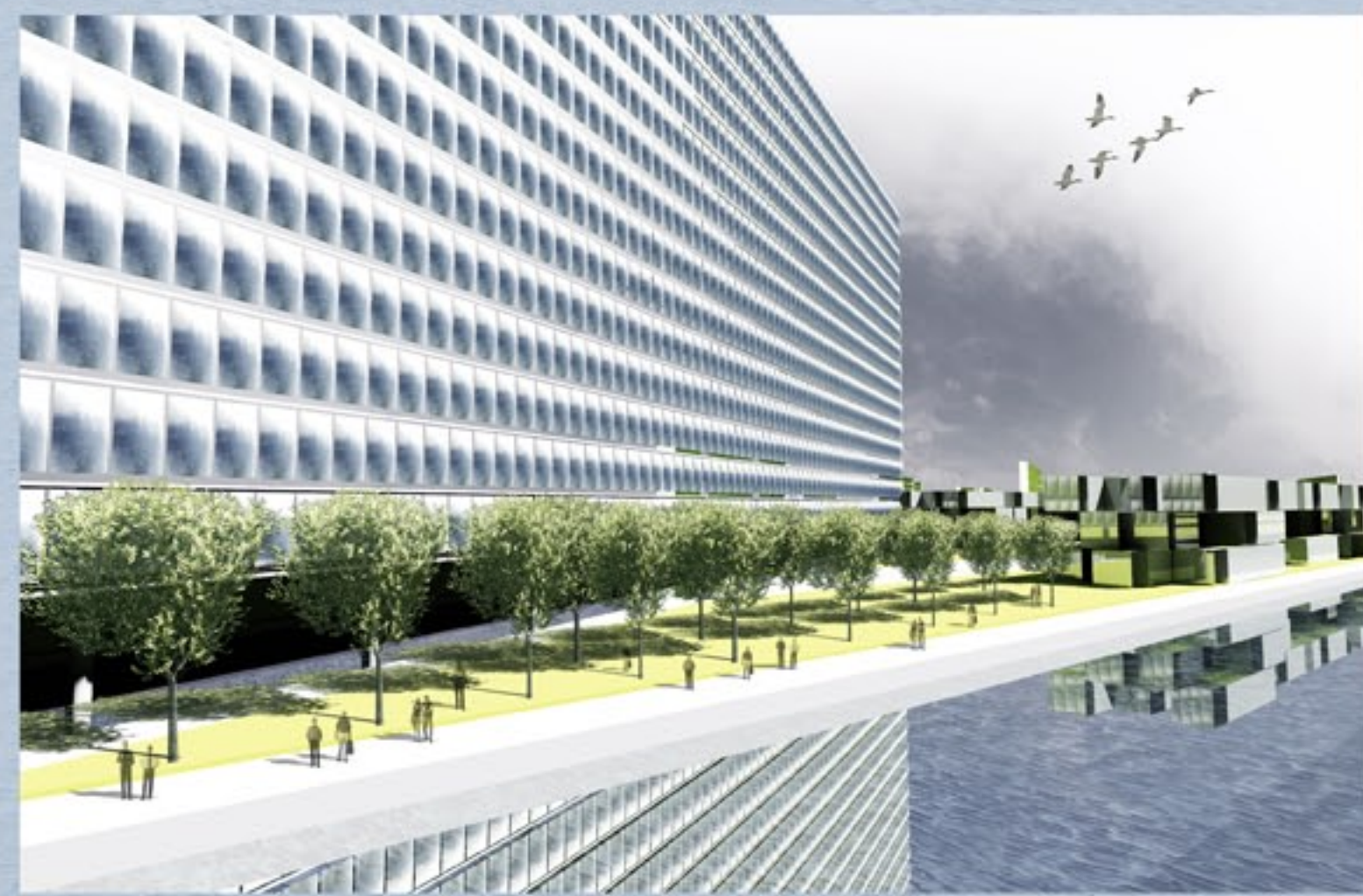
ADVANCED SEA UNDERSTANDS THE POTENTIAL OF RISING SEA LEVELS AND APPROACHES IT NOT AS A PROBLEM BUT AS A SOLUTION TO OUR GROWING NEEDS FOR RENEWABLE ENERGIES & POTABLE WATER. BY EXCAVATING WATERWAYS INTO OPEN FLOODPLAIN SITES NEAR CITIES, ADVANCED SEA PROTECTS VULNERABLE FLOODPLAINS WHILE ALSO CREATING SELF-SUSTAINING COMMUNITIES AND PROVIDING ADJACENT CITIES WITH CLEAN ENERGY AND WATER. ADVANCED SEA UTILIZES SEVERAL SUSTAINABLE STRATEGIES THAT WORK TOGETHER SYMBIOTICALLY. WATER TURBINES ALONG THE WATERWAYS GENERATE ELECTRICITY THROUGH DAILY TIDAL MOVEMENT. DESALINATION TOWERS AT THE END OF EACH WATERWAY CONVERT SALT WATER INTO FRESH WATER FOR DRINKING AND IRRIGATION VIA THE NATURAL PROCESS OF EVAPORATION AND CONDENSATION. ALGAE TOWERS PERPENDICULAR TO THE WATERWAYS CONVERT ALGAE INTO BIOFUEL. FISH HATCHERIES ARE LOCATED WITHIN WATERWAYS THAT OPEN AND CLOSE TO ALLOW FOR VARYING WATER SALINITIES FOR BREEDING DIFFERENT SPECIES OF FISH. ROOF GARDENS ATOP HOUSING ARE IRRIGATED BY WATER FROM THE DESALINATION TOWERS TO PROVIDE RESIDENTS WITH FRESH HOMEGROWN PRODUCE. THESE STRATEGIES WILL NOT ONLY SUSTAIN COMMUNITIES IN THE ECOLOGICAL SENSE, IT WILL ALSO PROVIDE JOBS AND ECONOMIC STABILITY.



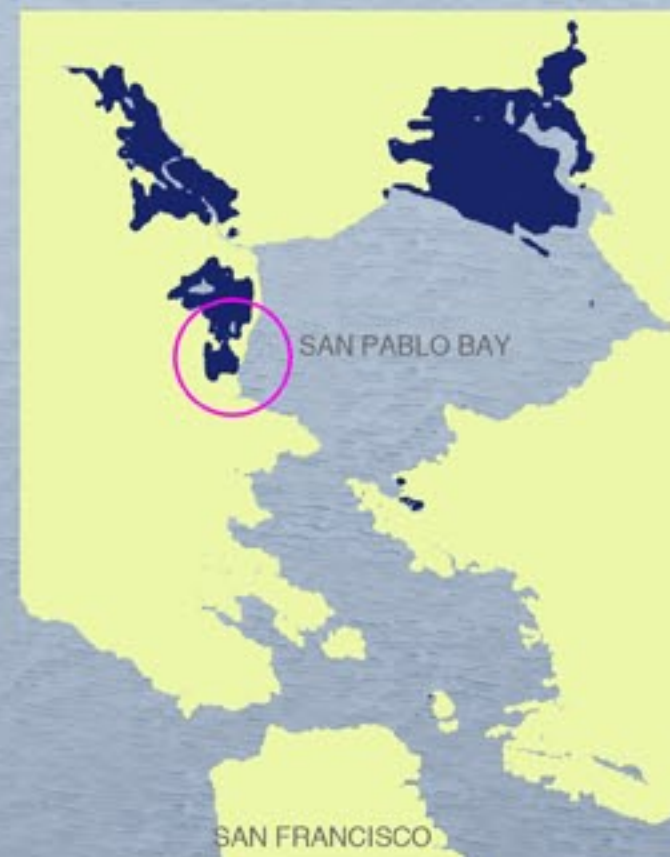
AERIAL VIEW



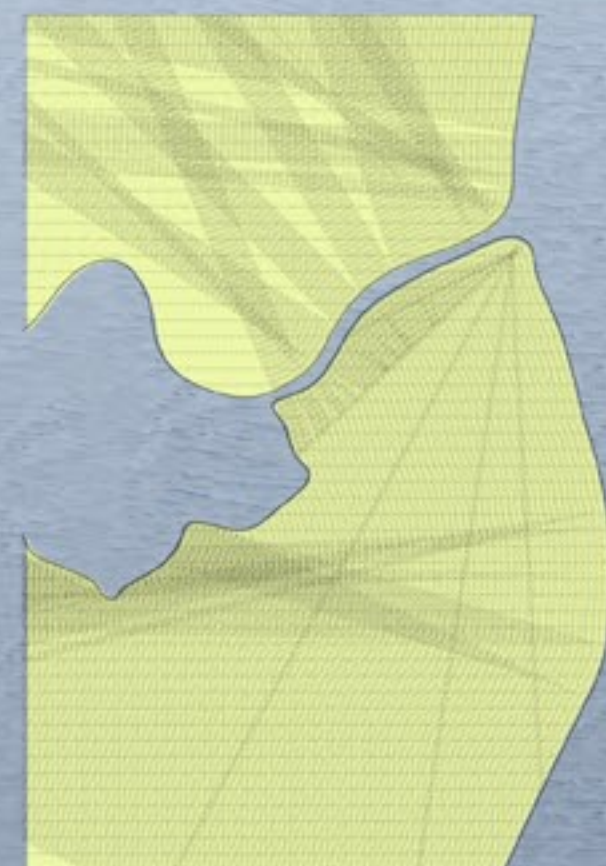
VIEW DOWN WATERWAY LINED WITH HOUSING & ALGAE TOWERS



VIEW OF DESALINATION TOWER



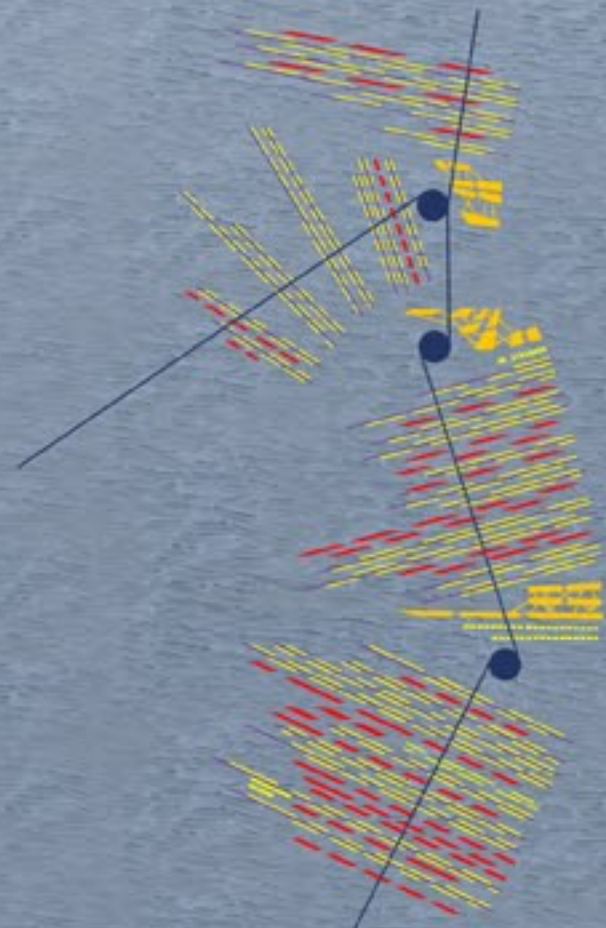
SITE CHOSEN FOR ITS PROXIMITY TO SAN FRANCISCO, ITS LARGE OPEN SPACES, & ITS PROCLIVITY TO FLOODING



WATERWAYS PERPENDICULAR TO ESTUARY AND EAST-WEST ORIENTATION OF ALGAE & DESALINATION TOWERS FORM A GRID

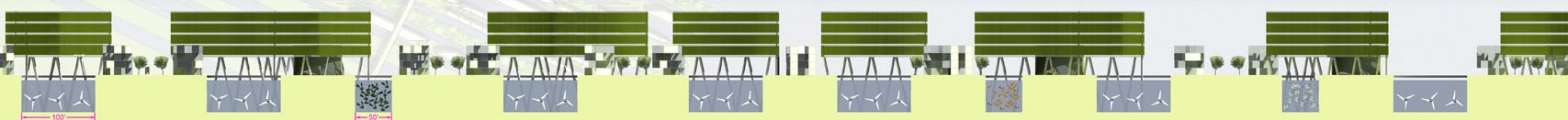


GRID IS TRANSLATED INTO WATERWAYS, LAND STRIPS, AND OPEN SPACES



A CITY IS BORN WITH DIRECT VISUAL, PHYSICAL, AND SUSTAINABLE CONNECTIONS TO WATER

- [A] WORKPLACES, RESEARCH CENTERS, AND MUNICIPAL BUILDINGS ARE LOCATED ALONG WATERWAYS AND ACCESSED VIA PUBLIC TRANSPORTATION AND BRIDGES.
- [B] MULTI-FAMILY HOUSING WITH ROOF GARDENS PROVIDE AGRICULTURAL SUSTENANCE TO RESIDENTS. ROOF GARDENS ARE DIRECTLY CONNECTED TO DESALINATION SYSTEM FOR IRRIGATION.
- [C] MAGLEV TRAIN HUBS ARE LOCATED BY CULTURAL & RECREATIONAL ZONES WITH INTERMEDIATE STOPS TO FURTHER CONNECT RESIDENTS TO THEIR NEIGHBORS AND THEIR CITY.
- [D] CULTURAL & RECREATIONAL ZONES ARE CLUSTERED IN OPEN SPACES AND CONNECTED VIA WALKWAYS.
- [E] DESALINATION TOWERS CONVERT SALT WATER TO POTABLE WATER FOR EACH COMMUNITY AS WELL AS NEIGHBORING CITIES VIA THE NATURAL PROCESS OF EVAPORATION AND CONDENSATION OF OCEAN WATER, SUN, AND WIND. IN ORDER TO MAXIMIZE SUNLIGHT AND EFFICIENCY, THESE TOWERS ARE ORIENTED FACING SOUTH AND AT THE ENDS OF EACH WATERWAY. OF ALL THE EARTH'S WATER, 94% IS SALT WATER & 6% IS FRESH - IT ONLY MAKES SENSE TO HELP REDUCE RISING OCEAN LEVELS BY DESALINATING IT TO MEET OUR FRESHWATER NEEDS FOR DRINKING, IRRIGATION, ETC.
- [F] ALGAE TOWERS CONVERT ALGAE INTO BIOFUEL. NOT ONLY IS ALGAE A GREAT SOURCE OF FUEL AND THE FASTEST GROWING PLANT ON THE PLANET, IT ALSO HELPS STABILIZE THE CONCENTRATION OF CO<sub>2</sub> IN THE EARTH'S ATMOSPHERE. AS WITH THE DESALINATION TOWERS THE ALGAE TOWERS ARE ORIENTED FACING SOUTH TO MAXIMIZE SUN EXPOSURE AND LOCATED ALONG WATERWAYS FOR DIRECT SUPPLY OF WATER.
- [G] HYDROPOWER IS GENERATED FROM WATER TURBINES LOCATED WITHIN WATERWAYS. WATER TURBINES ARE SIMILAR TO WIND FARMS BUT INSTEAD ARE UNDERWATER AND ARE PROPELLED BY TIDAL CURRENTS MOVING IN AND OUT FROM THE WATERWAYS.
- [H] AQUACULTURE PROVIDES THE POPULATION WITH LOCAL FISH AND OTHER MARINE-BASED FOODS. WATERWAYS WILL OPEN AND CLOSE TO ALLOW VARYING LEVELS OF SALINITY IN THE WATER IN ORDER TO BREED DIFFERENT TYPES OF FISH.



SECTION ZZ